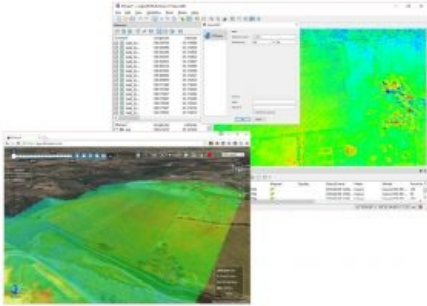


# Agisoft Incorporates 4DMapper Direct Integration API



Photogrammetry software company Agisoft has integrated 4DMapper's direct upload API in its latest release of PhotoScan Professional. This value-add will make it easier for PhotoScan users to share large files created using the software by streaming to recipients' browsers.

Traditionally data produced by photogrammetry software was delivered using blind cloud sharing services, FTP, hard drive delivery or GIS servers. Recipients then needed capable computers, software or plugins to access and use this data. Now, this data moves quickly to web browsers without any software.

## UAV software solution

PhotoScan, a product of Russian-based Agisoft, is a preferred software solution for UAV operators worldwide. The company continually undertakes R&D work to incorporate high-end technologies into their software enabling users to have the best tools available to solve 3D reconstruction, visualisation, surveying and mapping tasks.

Integrating 4DMapper into the latest version of PhotoScan was a logical step, with the Australian technology company marketing the automated web-based platform for streaming, sharing and using big geospatial data. Users of PhotoScan can now upload orthomosaics, 3D digital terrain models, point clouds and soon vector data and textured mesh models directly to their 4DMapper account.

## Data delivery

Once on 4DMapper these massive files can be streamed immediately to multiple end users, simply on their web browsers, enabling rapid access, engagement, management, measurement, digitising and "live" collaborative work on projects. Users can digitise in 3D, add descriptions and measure volumes, areas, lines and points with no software or heavy hardware required.

4DMapper Business Development Manager Rob Klau says 4DMapper breaks down the data delivery bottleneck. It leverages the value of the data by bringing it to a larger audience with non-technical users being able to access and collaborate on their web browsers. The 4DMapper Direct Upload API is available for integration with desktop software, cloud-processing services and geospatial data hosting services.

The mission at 4DMapper is to add value to the geospatial industry by enabling efficient and fast movement of data between data providers, processors and end users, Rob Klau concluded.