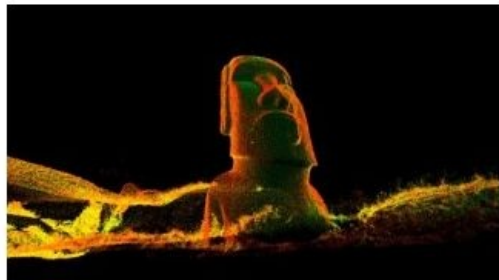


# Autodesk Supports Easter Island Quest



Autodesk (United Kingdom) is working with Easter Island officials, local archeology experts and several partners to provide technology, services and expertise to help digitally document Easter Island's current historical artifacts, natural resources and infrastructure assets.

The work will create 3D models of the island (locally known as Rapa Nui) allowing government officials to better visualise and analyse how development plans will impact residents and resources, and promote sustainable decision-making. As the project progresses, images, photos, articles and diary entries from participants will be regularly posted, on the website.

Rapa Nui is a UNESCO world heritage site and Chilean-governed island in the south eastern Pacific Ocean, famous for its enigmatic moai statues, monolithic human figures carved from rock. In recent years, Rapa Nui has drawn increasing interest as a tourism destination, creating strain on the island's infrastructure and its delicate environment and archeological resources.

A team first traveled to Rapa Nui in October 2007 to laser scan and survey the island. Autodesk partners include METCO Services, Inc., provider of surveying and scanning services and technology, and Leica Geosystems which contributed GPS and laser scanning instruments and point-cloud processing software. Team members trained Rapa Nui officials on the use of these technologies and Autodesk digital modeling software, so developers and engineers can continue to evaluate and make sustainable development decisions over time.

Existing AutoCAD software customers on Rapa Nui engaged in the project will be migrating to advanced 3D modeling and visualisation technologies from Autodesk, including AutoCAD Civil3D, Autodesk MapGuide and AutoCAD Revit design software.

---

<https://www.gim-international.com/content/news/autodesk-supports-easter-island-quest>

---