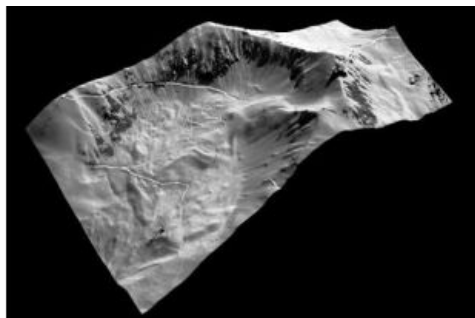


Leica XPro 5.0 Available



Leica Geosystems has announced a DSM extraction module for its line sensor workflow software Leica XPro, which provides advanced ground processing from data download to image generation. Users of Leica XPro 5.0 can now generate stereo-viewable image frames from line sensor data acquired with the Leica ADS Airborne Digital Sensor, thus taking advantage of the high geometric and radiometric accuracy associated with the Leica ADS, whilst maintaining familiar workflow and data archiving standards.

Leica XPro DSM is tailored for high-performance and high-resolution DSM computation.

This new module perfectly integrates within the Leica XPro workflow and offers an option

to obviate Lidar missions for orthophoto production and DSM generation, thus saving additional flight cost.

Capturing the imagery and surface models during the same flight offers the advantage that image features and image geometry perfectly match with the DSM. Leica XPro DSM has already been successfully used in production by North West Geomatics and has now been released as a new module of Leica XPro 5.0.

The new Leica XPro Slicer is an effective tool for slicing L1 flight lines into easy-to-store and easy-to-deliver stereo-viewable image tiles. XPro Slicer products form an excellent basis for those who prefer traditional frame-based 3D mapping and feature extraction, both in the office and also in the field. In addition, stereo-viewable frames can now easily be stored along-side other frame imagery.

<https://www.gim-international.com/content/news/leica-xpro-5-0-available-2>
