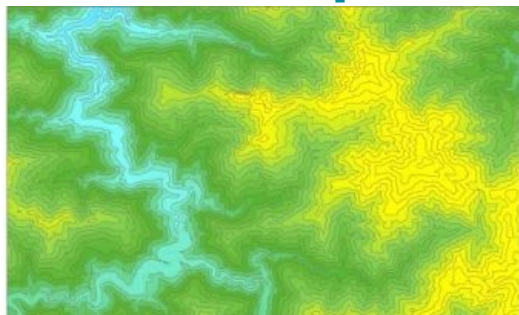


Nexgeo Picks SuperGIS Desktop to Process Spatial Data



According to GIS software and solution provider Supergeo Technologies, [Nexgeo](#) has selected [SuperGIS Desktop](#) for processing and visualising geospatial data. Established in 2001 and headquartered in Seoul, Nexgeo is a Korean consulting firm and construction contractor involved with solving various georelated tasks, such as building a geological resource database, creating a disaster monitoring system and developing geothermal energy capacity.

Supergeo products are frequently selected by customers from different countries including those that have a robust domestic IT industry like the US, the UK or in this case, Korea. SuperGIS Desktop is full-featured desktop GIS software, which can deliver the performance and efficiency needed for a company like Nexgeo.

In addition to basic GIS functions like Buffer, Clip or Union, technicians in a geotechnology company can calculate slope, aspect, curvature of a specified area and create isarithmic maps through the [3D analyst](#) extension of SuperGIS Desktop, which can significantly reduce the time and resources spent on these tasks. Supergeo also has long-term experience in developing Server GIS and Mobile GIS, which can help users to establish an online map platform or to survey various landscapes with ease.