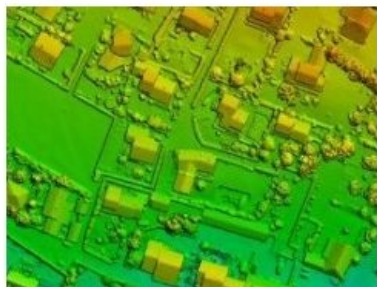


SimActive and Delair-Tech Provide UAV Solution for SNCF



SimActive, a Canadian developer of photogrammetry software, has announced the purchase of multiple Correlator3D licences by SNCF, a world leader in mobility and logistics. The software is used in conjunction with UAVs from Delair-Tech, SimActive's partner.

The collaboration between SimActive and Delair-Tech brings a high-end solution to the drone mapping industry. The speed and accuracy of Correlator3D, combined with the autonomy of Delair-Tech UAVs, allow a turn-key reference solution for completing large-scale projects.

Delair-Tech was the first company in the world to provide a drone solution for operations beyond line of sight, said Benjamin Benharrosh, co-founder and sales & marketing director of Delair-Tech. Similarly, SimActive is the premier software for clients with advanced needs on extensive projects, he added.

Dr Philippe Simard, president of SimActive, said he is proud to be selected by [SNCF](#) to fulfil inspection needs on its vast railway network.

For a live demonstration at the International LiDAR Mapping Forum (22-24 February Denver, Colorado, USA), please visit booth 57 or send an email to sales@simactive.com.