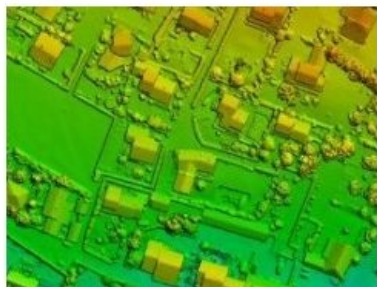


# SimActive Announces Correlator3D Version 6.2



SimActive, a Canadian developer of photogrammetry software, has launched Correlator3D version 6.2, featuring a new module for tie point editing during aerial triangulation. Users can visually inspect and edit any link, with the ability to add tie points as an alternative to projects with low overlap or poor image quality.

Correlator3D 6.2 also introduces advanced volumetric measurement tools, NDVI maps, and coloured point clouds. The added features are of particular interest for datasets collected by UAVs.

Correlator3D has increased robustness at addressing challenging projects, salvaging suboptimal data by producing deliverable results, said Louis Simard, CTO of SimActive.

The expanded capability for data analysis helps both advanced photogrammetrists and experts in applications such as agriculture and mining. SimActive continues with its mission to offer simple solutions to complicated problems.

---

<https://www.gim-international.com/content/news/simactive-announces-correlator3d-version-6-2>

---