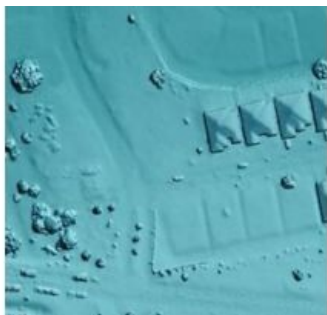


SimActive Releases Correlator3D Version 5.0



SimActive, the Canada-based leading developer of photogrammetry software, has released version 5.0 of Correlator3D. This major release features numerous improvements, including the enhancement of Correlator3D aerial triangulation module (AT) with visualisation and editing tools, as well as improved DTM and 64-bit support.

Correlator3D AT visualisation allows users to obtain an overall quality assessment of their project in the blink of an eye. This is accomplished by displaying links between images after tie point collection and residuals with a colour coding system following bundle adjustment. Users can quickly pinpoint which section in project needs more tie points and request the software to create them.

In addition, native 64-bit support was added and the DTM generation module was completely redesigned. The new DTM algorithms result in a higher level of accuracy while processing times were brought down from several hours to a few minutes only.

Louis Simard, CTO of SimActive, said his company achieved a major milestone by redesigning many core aspects of the software for this release. This new version is faster, more robust and represents the latest in cutting-edge photogrammetry software, Simard added.

For more information on the Correlator3D software see [here](https://www.gim-international.com/content/news/simactive-releases-correlator3d-version-5-0).

<https://www.gim-international.com/content/news/simactive-releases-correlator3d-version-5-0>
