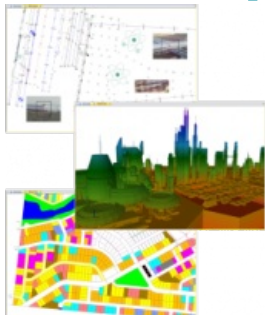


Listech Unveils New Generation of Geospatial Software



Listech, a Hexagon Geosystems brand, has added increased functionality to its new geospatial software Neo, with terrain modelling, volume calculation and imagery offerings. With an integrated 3D/2D environment for viewing of information with extremely fast graphics in a modern interface, Neo offers the creation of an unlimited number of terrain models of any size. Users can quickly add contours at their preferred intervals with full control of label placement and clipping of contour lines. They can calculate and report volumes and areas of cut and fill from models to a base plane. Neo is very suitable for combining, editing and moving data between various office and/or field systems.

Enhanced imagery

In this latest update of Neo, the new Image GeoRef module enables crystal clear viewing of images from UAVs, satellites and maps in numerous formats, serving as a backdrop for vector data. Online imagery from services such as the Hexagon Imagery Program (HxIP), Esri World Imagery, OpenStreetMap plus others, can be connected to display dynamic georeferenced images in the new Image Connect module.

RM Surveys, a precision survey firm in Australia specialising in complex infrastructure projects, were one of the first to use Neo. After evaluating a number of other Building Information Modelling (BIM)-to-survey software packages, RM Surveys selected Neo because it was best suited to the firm's workflows and methodologies.

RM Surveys is using Listech Neo on a significant infrastructure project, predominately for the conversion of Industry Foundation Class (.IFC) files for use in their Leica Geosystems total stations and GPS survey instruments, said Neil Foster, RM Surveys technical manager.

Import and export

Neo seamlessly transfers information to and from BIM, GIS, CAD, Field Sensors and various other systems. Enhancements to Neo have made it easier than ever to export to Leica iCON build and import from buildingSMART IFC for more efficient workflows.

To learn more about Listech Neo [see here](https://www.gim-international.com/content/news/listech-unveils-new-generation-of-geospatial-software).