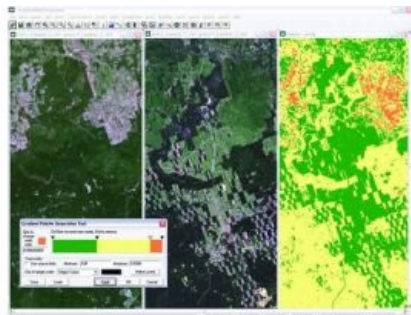


New Version of Image Processor Software



The new version of the software for handling RS data, ScanEx Image Processor 3.6, is now available for its users. This application has been widely used by different public organisations and private companies in Russia and abroad for in-depth analysis and thematic processing of Earth remote sensing data.

New features are extended possibilities of import/export of raster and vector data, automated detection of different data types and their loading into application; possibility to use Web Map Service (WMS); advanced tools for mosaic coverage creation; updated editor of vector data, SQL requests processing; new algorithm of supervised image classification: MaxEnt and Classification Trees; increased speed of training neural network algorithm (Neris); new algorithms of change-detection; new algorithms of image filtering,

color balance correction and increase of spatial resolution of images (sharp fusion); extended list of supported RPC formats and strict models; faster operation of the DEM module (5 times), new functions of DEM editing, isoline interpolation function; extended functionality on radar images operations, improved functions of oil slicks outlining; extended functionality of print layout, etc.

Functional of raster data batch processing is notably extended. A complete cycle of automatic ortho-transformation of space images is now available using batch processing technique.

The speed of application operation has been seriously increased, including due to paralleling of processing. The application is adapted to operate with large data volumes.

All those interested in new possibilities of ScanEx Image Processor 3.6 can download the light-version of the software by the following link. The light-version differs from the full commercial version by the absence of a number of functionality and cannot save the processing results.

<https://www.gim-international.com/content/article/new-version-of-image-processor-software>
