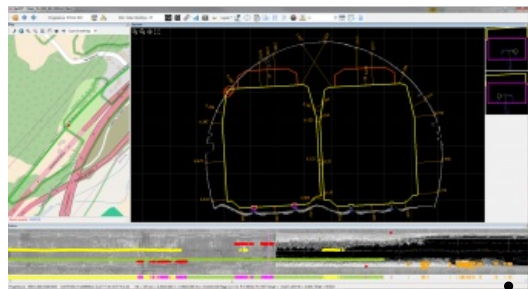


Siteco Rail-SIT Software Release



The Rail-SIT software application is a package for complete railway inspection and analysis. The software is fully compatible with the most widespread mobile mapping systems such as [Optech Lynx](#), [Riegl](#), [Topcon IPS3](#) and Leica Pegasus. The software integrates directly into the Siteco [Road-SIT Survey Suite](#), which is delivered as a standard software platform with the Road Scanner mobile mapping systems.

Key features of the Rail-SIT software are:

- Rail line inspection with mobile mapping systems
- Railhead detection, automated track and catenary geometry generation
- Dynamic generation of clearance outlines and interference calculation

- Checks and inspections, anchoring/fixing the end track position
- Tunnel inspection with cylindrical views of tunnel vaults
- Automatic generation of documents and reports

The Rail-SIT Software is a flexible tool, bringing additional functionality to laser scanning mobile mapping systems. When directly integrated with the [Road-Scanner4](#) and Road-Scanner Compact, existing laser scanners from Faro, Z+F, Leica, Velodyne and others, it can be deployed into mobile mapping applications, freeing them from being just static 3D scanners.