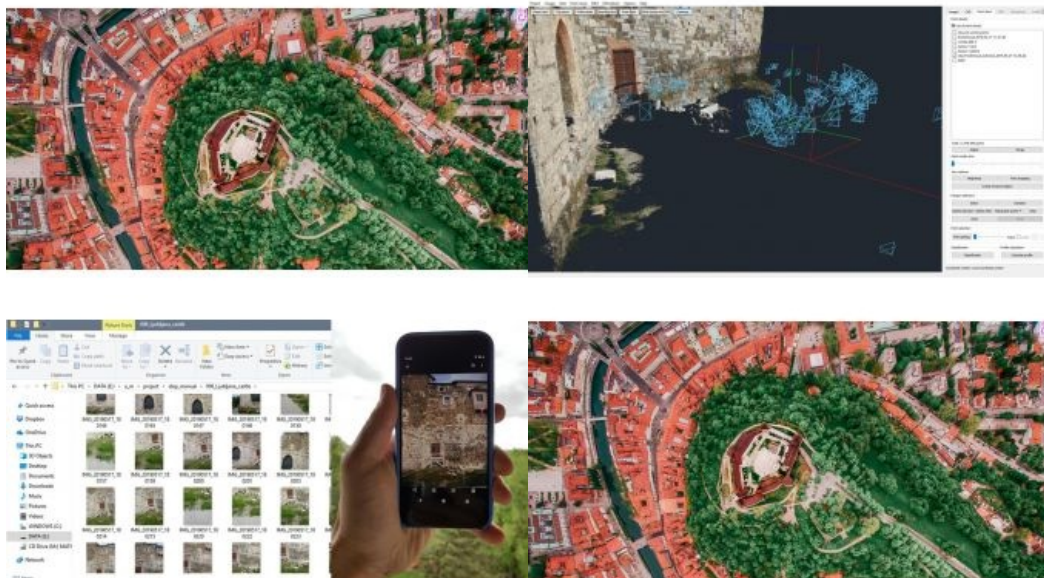


# Combining Smartphone and TLS in Ljubljana Castle Survey



The renovation of Ljubljana Castle – a key landmark of the capital of Slovenia – has been an ongoing project since the 1960s. The latest renovation occurred at the castle's wine cellar and its outer patio. A 3D model of the patio was made and further used for the visualization of patio. Recently, the castle's outer wall and terrain was surveyed with a terrestrial laser scanner (TLS). To compare results, a point cloud using [3Dsurvey](#) was computed.

The project was carried out by the Department of Geodetic Engineering, [Faculty of Civil and Geodetic Engineering](#) at the University of Ljubljana. The renovation is financed by Ljubljana Castle Public Institution and carried out by the architectural studio Ambient.



11,887,764 of point cloud points were collected.

## Smartphone imagery

As this part of the castle is not suitable for aerial images, ground photos were taken with a Google smartphone, at different vertical angles, with at least a 70% horizontal and vertical overlap. To reach a point cloud completeness, images had to be taken from different angles as the wall is in the shape of the letter L.

All 205 images were taken with a focal length of 5mm. For comparison, laser scanned point cloud was used for the extraction of ground control points (GCPs). Suitable wall details as well as the porthole were used for sparse point cloud orientation. The surveying crew achieved spatial accuracy better than 12mm.



The Ljubljana Castle wine cellar patio was mapped with a smartphone.

## CAD tools and point cloud technology

[3Dsurvey](#) CAD tools were used to outline the cellar's doors and doorstep. A 3D model was georeferenced to point the cloud's location using exported CAD lines. The main goal of this task was to provide a background for the patio visualization and for this reason, the 3D model was converted to a point cloud.

The castle's point cloud was displayed together with the one made for the patio. As point clouds were of high density, they could be used as a realistic background for visualization purposes.

To visualize the project better, both the 3Dsurvey point cloud and the one made with TLS were combined. A further detailed view shows slight differences of 2cm in the location of point clouds. Considering that the 3Dsurvey point cloud was computed from images, taken with smartphone camera, results show great potential for visualization purposes.

For a complete overview of the project, visit 3Dsurvey's [showcase page](#).



Aerial view of Ljubljana Castle, situated on Castle Hill above downtown Ljubljana, the capital of Slovenia. (Image courtesy: Ljubljanski grad)

