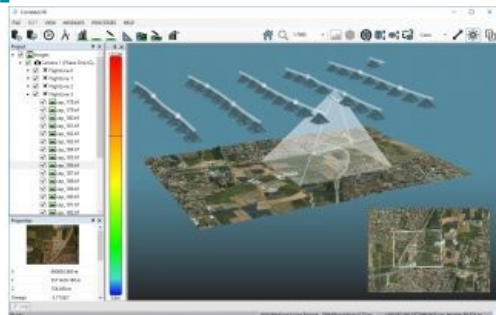


SimActive Launches Picture-in-picture 3D Viewing



SimActive has announced Correlator3D version 6.5 with a new picture-in-picture (PiP) feature. The PiP brings a 3D rendered view of projects through an inset window, visible at all times to streamline processing and editing. The interactive viewing capability of [version 6.5](#) allows display of image locations and associated viewing pyramids, as well as DSMs, DTMs, orthophotos and mosaics. Ground control points, check points and aerial triangulation results are displayed in 3D to facilitate quality control.

The PiP allows a 3D visual assessment of data and results throughout the entire production workflow, including real-time modifications displayed during DEM editing.

SimActive continues the tradition of introducing distinct concepts to the industry, said Louis Simard, CTO. While other tools may allow 3D visualisation, the ability to view the project in both 2D and 3D in simultaneous windows provides an unprecedented advantage to the Correlator3D users.

For a live demonstration at Intergeo (11-13 October, Hamburg, Germany), you are welcome to visit booth A4.035.

To see the latest version of Correlator3D on 22 September 2016, 10:00 AM Pacific Time, sign up for the next Webinar [here](#).