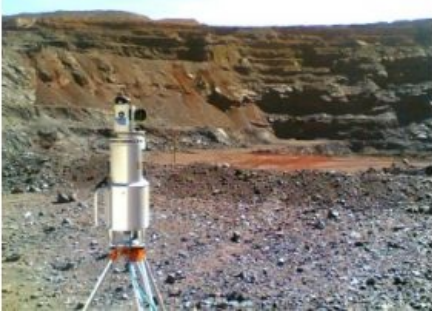


# 3D Laser Mapping Supports Kumba Iron Ore Extraction



3D Laser Mapping (United Kingdom) is helping Kumba Iron Ore to improve the safety of iron ore extraction in South Africa. 3D Laser Mapping has supplied and installed a Riegl LMS Z420i laser scanner, the first scanner of its type in South Africa.

The laser scanner is being used to monitor slope deformation in order to reduce the levels of risk to personnel and equipment that occur as a result of potential slope failure. The system uses the latest laser technology to capture highly accurate slope measurements that are then analysed to identify areas of movement and therefore potential failure.

“The laser scanning system has a number of features that make it ideal for our environment and application” said Glen Mc Gavigan of Kumba Iron Ore’s

Geotechnical Services. He continued, “Laser scanning complements our existing slope monitoring equipment and adds an extra dimension to the monitoring network at Sishen; improving the safety of personnel and reducing risk in our operations.”

Kumba Iron Ore is the first mining company to be listed on the Johannesburg Stock Exchange that concentrates wholly on the extraction of iron ore. Formed as a result of the restructuring of Kumba Resources, a process that also created Exxaro, Kumba Iron Ore is majority owned by Anglo American plc. The newly formed Kumba Iron Ore has two operations in South Africa, which combined make it the fourth largest supplier of sea-borne iron ore, exporting 73% of its 32Mtpa production. Sishen mine based in the district of Postmasburg in the Northern Cape of South Africa is the larger of the two operations. A conventional open pit operation with extraction dating back to the 19th Century Sishen achieved a record production of 28.5 million tonnes last year.

Source: [3D Laser Mapping](#)