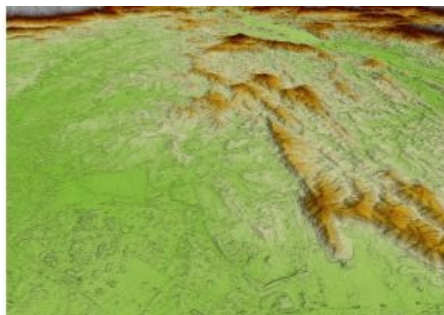
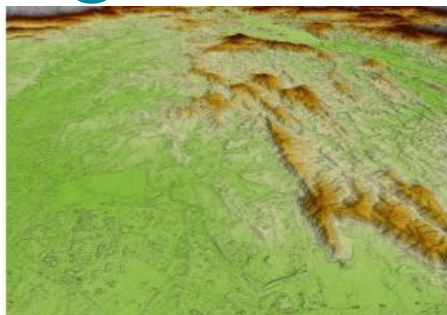


Airbus Unveils New Global Digital Elevation Model



Airbus Defence and Space has launched WorldDEM Neo, its new global Digital Elevation Model, offering an updated and more precise 3D dataset of the entire Earth's land mass to serve a wide range of applications, from mapping to flight simulation.

As the Earth's surface is a dynamic system where changes continuously occur, whether due to natural processes

or human actions, it is essential to regularly update the existing DEMs. Produced from new data acquired between 2017 and 2021, WorldDEM Neo provides seamless pole-to-pole coverage and standardized global DEM with no regional or national border divides. According to Airbus, the data is also more accurate, as it now offers 5m pixel spacing instead of 12m previously, and guarantees a 2.5m absolute vertical accuracy.

This WorldDEM Neo's homogeneous coverage, combined to a higher accuracy, is very suitable for commercial aviation flight systems as well as for military applications (fighter aircraft, helicopter and UAVs), mission planning and operations. The 3D dataset also offers many potential uses in oil, gas and mineral exploration, as well as for civil engineering, network planning and infrastructure construction. WorldDEM Neo is also valuable to create maps of less than 1:10,000 scale and serves as high-quality base data in the field of orthorectification of aerial or satellite imagery.

[For more information, see here.](#)



Imagery of Vietnam WorldDEM Neo. (Courtesy: DLR and Airbus Defence and Space)