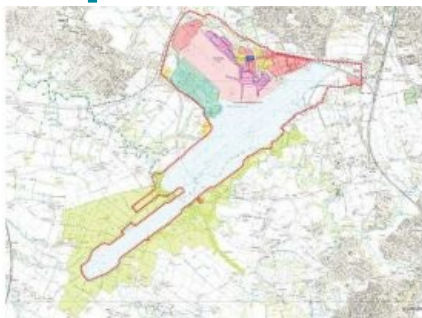


# Airports GIS Package



An Esri Aeronautical Solution: Airports GIS Package has been specifically developed to help US airports comply with the Federal Aviation Administration's (FAA) Airports GIS data management and submission requirements.

In 2009, the FAA published Advisory Circular 150/5300-18B, detailing a regulation that establishes a comprehensive digital data standard for US airports. As part of the standard, US airports are required to submit accurate, high-quality GIS data that will be subjected to quality checks. Esri Aeronautical Solution: Airports GIS Package provides airports and the consultant community with an integrated toolkit of automated GIS functionality. The

solution includes preconfigured workflows, data validation rules, cartographic layouts, and editing templates. It makes the collection, management, quality control, and submission of airport data more efficient, resulting in time and cost savings.

Until the end of 2011, Esri is offering an Esri Aeronautical Solution: Airports GIS Package license at bundled pricing to US airports and consultants doing work under the FAA's Airports GIS programme.

---

<https://www.gim-international.com/content/news/airports-gis-package>

---