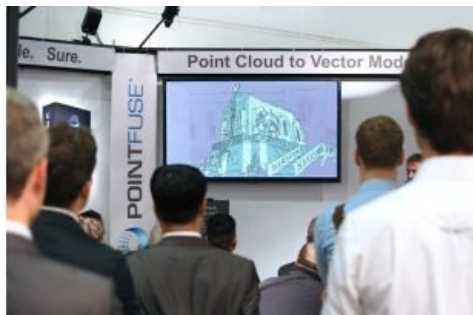


Arithmetica to Launch Pointfuse Pro at SPAR Europe



Arithmetica is launching Pointfuse Pro, a new version of its automated point-cloud processing software that offers batch and simultaneous processing options. Pointfuse Pro is designed to provide professional users with high-volume workflows with a fast, precise and flexible way of converting laser-scanned point clouds into highly accurate vector models. The official product launch will take place at SPAR Europe, the conference and exhibition focussed on 3D measurement and imaging, which will be held from 8-10 December 2014 in Amsterdam, The Netherlands.

For the first time potential users can now download an evaluation version of Pointfuse Pro from Arithmetica's website allowing for the production and export of 3D models for use further down the workflow in third-party software.

In order for potential users to evaluate the capability of Pointfuse Pro they may need to understand exactly how it will fit into their existing workflows, commented Mark Senior, Pointfuse development manager, which is why the company is offering a 14-day evaluation version. With an unrestricted number of converts from point cloud to vector model during this period, and up to ten 3D and 2D model exports, Pointfuse Pro Evaluation allows potential customers to get a real feel for the power of Pointfuse Pro and its impact on their point-cloud processing and model production, Senior continued.

Pointfuse is fully mobile-compatible, and is developed to process data from mobile scanners as easily and quickly as from terrestrial or airborne systems. Its results can also be output and used on standard handheld mobile devices for use in the field. Arithmetica will be building on launch of Pointfuse Pro at SPAR Europe with additional processing modules coming to market in 2015.