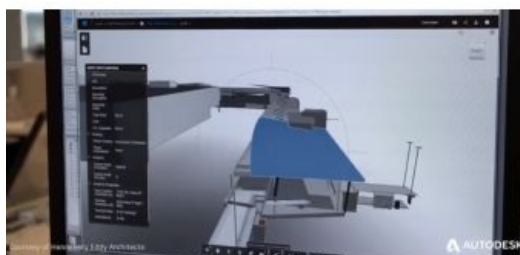


Autodesk and Esri Partner to set BIM-GIS Integration Agenda



Esri and Autodesk have announced a collaboration that signals an aim of integrating their software portfolios and working towards enabling freer and deeper flows of data between professionals using their tools.

The two software producers are seemingly targeting major infrastructure development with this move — scenarios where mass-scale spatial data modelling needs may need to inform complex structure design.

“The announcement is intended to build the bridge between BIM infrastructure design tools and GIS mapping technologies, to create more sustainable and resilient design through enhanced project insight, and improve end-to-end flow of materials, resource

availability and scheduling during construction. Tightly connected GIS and BIM workflows can help stakeholders better understand how natural and existing environments connect with future assets,” according to Esri Australia.

Autodesk CEO Andrew Anagnost said the partnership supports opportunities to secure sustainable resources for the growing population, which will be the biggest draw for government. “Our vision is to combine the power of BIM and GIS to provide industry and city planners the ability to design in the context of the real world – to build more connected, resilient cities, and infrastructure with a focused eye on sustainability,” he said.

Managing Director of Esri Australia Brett Bundock said the new partnership will help Architecture, Engineering and Construction (AEC) firms and project owners to deliver more sustainable and resilient infrastructure. “The two technology platforms will seamlessly integrate, giving designers and planners the ability to intuitively connect information across a projects’ lifecycle. It’s a significant development which provides the AEC community with the world’s most advanced BIM/GIS capabilities – enabling infrastructure to be designed in a truly accurate ‘real-world’ context,” he said.

<https://www.gim-international.com/content/news/autodesk-and-esri-partner-to-set-bim-gis-integration-agenda>
