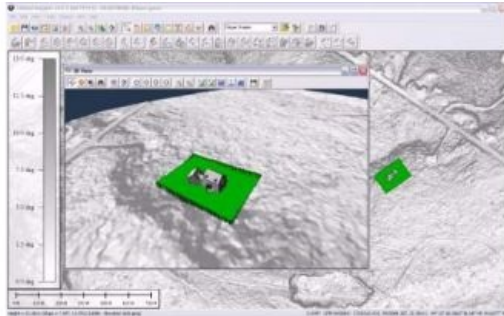


# Blue Marble at ISPRS 2012



Blue Marble Geographics is exhibiting at the ISPRS Conference in Melbourne, Australia from 26 to 31 August 2012. They present Blue Marble Desktop v2.5 and Global Mapper v13.2.

Blue Marble Desktop v2.5 features Geospatial PDF support, speed improvements for vector processing, new Lidar updates with enhanced read and draw functions, support for LAS v1.4, and much more. With Blue Marble Desktop (Geographic Calculator, Geographic Transformer, and Spatial Connect ) users have access to data types. Within the Calculator, the Point Database Job allows users to perform multiple column conversions and visualise grid displays directly within the job itself. Additionally, the updated BigTiff file format support in the Transformer can process files of 4GB or larger. These features

facilitate users to complete jobs faster and more efficiently.

To complement the Blue Marble Desktop, Global Mapper 13.2 will also be available for demonstrations. This utility is a viewer and translator for hundreds of file formats and much more. Blue Marble will also be featuring the beta of Global Mapper v14, which is slated for release in September 2012. The current version of Global Mapper includes updates to premium imagery services, both in speed and coverage. These updates will provide users with faster access to more up-to-date and higher resolution imagery in most locations, specifically with access to Intermap NextMap web store 2.0 for rich, high-precision elevation and expanded coverage data sets. There is also added support for specifying custom paper sizes for geospatial PDF support in version 13.2. This minor version release includes new format support for LogASCII, Norwegian SOSI export, PCI Geomatics PIX, NDVI in HDF5 format, EasyGPS .loc, and other formats. There are enhancements to the Digitizer tool as well as many other updates throughout the software. Version 14 will feature support for spatial databases such as ArcSDE, personal and file geodatabases, Oracle and Postgres spatial, along with enhanced water flow modelling, improved right click and toolbar menus and a host of new file formats.

BlueMarble Geographics is exhibiting in Australia for the first time, located at ISPRS in Booth 27B.