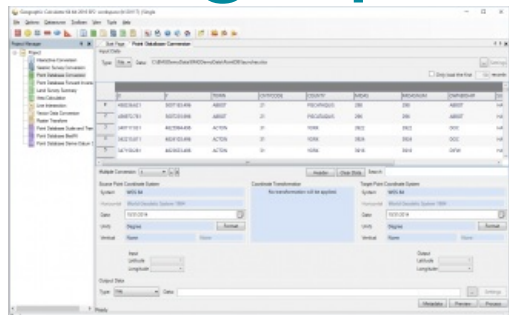


Blue Marble Releases Geographic Calculator 2017



Blue Marble Geographics has announced the immediate availability of its Geographic Calculator 2017. The release introduces a new job for performing quality control on seismic survey data, it includes updates to the Geodetic Datasource, which forms the core of the application, and it adds the Ordnance Survey OSTN15 geoid model for improved vertical coordinate transformations in the UK.

For over two decades, Geographic Calculator has been universally regarded as one leading coordinate and datum management software solutions. The foundation of Geographic Calculator's geodetic data processing functionality is the GeoCalc datasource, the foremost collection of coordinate system definitions, transformation algorithms, and

other geodetic parameters. As with all previous upgrades, the 2017 release incorporates the most current EPSG database definitions into the datasource ensuring accuracy in any calculation workflow. The inclusion of the British Ordnance Survey's OSTN15 geoid, which replaced the OSGM02 geoid in September of last year, enables more precise vertical data management, with an average estimated shift from the old geoid of approximately 0.025m throughout the mainland UK.

Seismic lines

The most significant enhancement in the 2017 release is the inclusion of the new Seismic Survey QC job for checking the quality of preplot and poststack seismic lines between UKOOA and SEG-Y files. This multifaceted component simultaneously checks the line accuracy; validates the heading; locates duplicate shot records; counts the number of points and lines in each seismic file; and generates a report of those points that are outside the required specifications.

Seismic data processing has been an important component of Geographic Calculator for many years, stated Blue Marble's President, Patrick Cunningham. The development of the QC job significantly enhances this functionality and allows seismic technicians and data managers to improve the accuracy of their surveys.

For a complete list of new features and enhancements in the 2017 release or to download a trial copy of Geographic Calculator, [see here](https://www.gim-international.com/content/news/blue-marble-releases-geographic-calculator-2017).