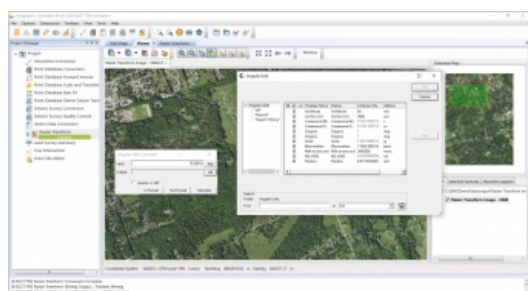


# Blue Marble Releases Geographic Calculator 2020 with New Remote Desktop Licensing



Blue Marble Geographics has announced the release of the 2020 version of Geographic Calculator – a geodetic toolkit for accurate coordinate conversion and datum transformation. Geographic Calculator is a powerful geodetic software solution with particular strength in survey, seismic and energy exploration.

In addition to a single point, point database, and file conversion tools, this highly accurate transformation software includes many specialized tools such as Canadian DLS (Dominion Land Survey) Land Grid tools, Seismic Survey Conversion tools, Area of Use tools for guiding users to the most appropriate transformation settings for a specific location, Horizontal Time-Dependent Positioning (HTDP), Geoid Creation tools, and much more.

## Support for converting Lidar

The 2020 version of Geographic Calculator comes with many new features and improvements, including a new Remote Desktop Protocol (RDP)-enabled Single-User Floating license option for customers who need to access Geographic Calculator from another computer. Other important features are new magnetic declination models including World Magnetic Model 2020 and IGRF13 as well as support for converting Lidar using local best-fit engineering coordinate systems. There is also a new early-bound coordinate system function for allowing a coordinate system to be paired with a datum transformation to streamline business rules on commonly used transformations. This release includes expanded Enterprise Datasource management to streamline updates in an enterprise-wide deployment with an automatic update function to keep users in sync and it introduces support for Geoid 18 for the United States.

“Geographic Calculator continues to evolve with greater geodetic capabilities and remote access flexibility for today’s survey workforce,” said Sam Knight, [Blue Marble](#) Geographic’s director of product management. “The 2020 release lays the groundwork for further developments in enterprise workforces and supports our customers’ efforts to manage their geodetics assets more effectively.”

Since 1993, Geographic Calculator has been the coordinate conversion tool of choice for GIS and survey professionals around the world. The software quickly grew in popularity over that first decade and has maintained its reputation as the best coordinate conversion solution on the market.

More information about Geographic Calculator 2020 [can be found here](#).