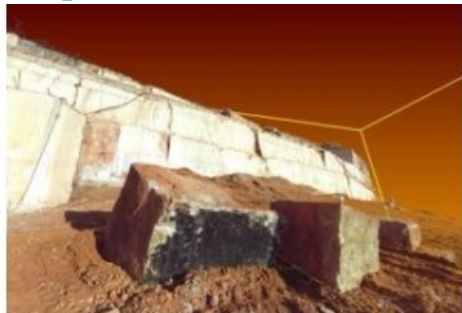


Conference on Technologies for Open Pit Mines Survey



CAM2 and Gexcel present the Italian event “New equipments and technologies for open pit mines survey” in order to show the benefits coming from the new hardware and software technologies and from the integration between laser scanner and GNSS/total station data. The event will be held in Brescia, Italy on 20 March 2014.

JRC 3D Reconstructor Mining software is a dedicated solution for surveyors that need to manage laser and UAV topographic data of mining sites and tunnels. 3D points surveyed by GNSS or total station can be also easily combined with Lidar data, using the same large format East, North cartographic coordinates systems (i.e. UTM WGS84). The data process is supported by easy tools that allow the extraction of contour lines, crest and toe (mines break lines), DTM generation, volumes and cut and fill evaluation with printable

PDF reports, cross sections, coloured elevation maps. GeoTiff coming from UAV acquisitions can be easily managed to create high resolution orthophotos and textured DTMs. All the processes are guided thanks to a step by step wizards and the deliverables are CAD compatible.

During the conference, surveyors, technicians and professionals will describe practical experiences, realised in the Brescia area (one of the most important mining sites in Italy), where the laser scanner usage has simplified and reduced time and costs of survey activities in quarry environment.

The full compatibility between the Focus3D X 330 laser scanner, the Scene software and the Gexcel JRC 3D Reconstructor Mining software will be shown using real examples coming from sites of the Brescia area.

<https://www.gim-international.com/content/news/conference-on-technologies-for-open-pit-mines-survey>
