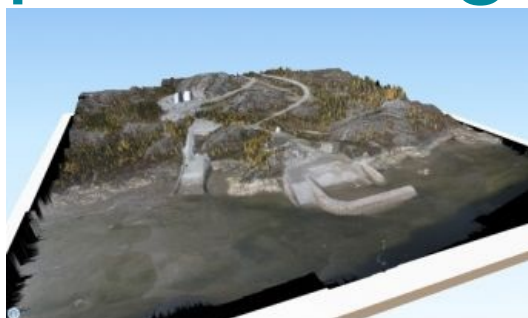


# Correlator3D Chosen by ING Robotic Aviation for Image Post-processing



SimActive, a Canadian developer of photogrammetry software, has been selected by ING Robotic Aviation, one of Canada's leaders in robotic aircraft solutions. Along with using SimActive's software for internal post-processing requirements, ING Robotic Aviation is recommending it as the de-facto software with its robotic aircraft systems.

Ian Glenn, CEO of ING Robotic Aviation, stated his company is extremely impressed with the maturity of the product compared with the other options on the market. Correlator3D integrates well with their systems, and the software's results speak for themselves, especially for real-world applications.

Having been around for over a decade now, Correlator3D has been adapted continuously to outpace the growing needs of the UAV industry, said Dr Philippe Simard, president of SimActive. Processing in minutes as opposed to days, the software increases client efficiency, immediately reflected in their bottom line. It is gratifying to give clients control over their projects, and extra time in their schedules, while increasing their profitability.

The image, enabled by SimActive's Correlator3D software, was taken during one of ING's operations in Kuujuaq, QC, Canada, for the purpose of road extension planning into the North.

*For a live demonstration at the European LiDAR Mapping Forum 2014 (8-10 December, Amsterdam, The Netherlands), SimActive invites you to visit booth 619.*

---

<https://www.gim-international.com/content/news/correlator3d-chosen-by-ing-robotic-aviation-for-image-post-processing>

---