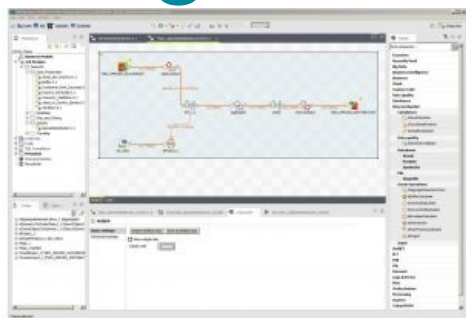


# Disy and Talend Introduce New Connector for Geospatial Integration



Disy Informationssysteme, a leading provider of spatial and environmental IT solutions in Germany, and Talend, a global leader in Cloud and Big Data integration software, have announced the availability of a Geospatial Connector for [Talend Data Fabric](#) that makes it easier for customers to integrate geographical or spatial information into their business decision analysis.

Built in conjunction with [Disy](#), the new connector seamlessly connects different spatial databases and types such as Oracle Locator/Spatial, PostGIS, SpatiaLite and Shape Files and WKT (well-known text) respectively, and automates tasks and workflows customised for geospatial operations.

The practice of collecting and publishing digital data about people, places and phenomena of all kinds has accelerated in recent years, particularly with the advancing proliferation of public data offered by various government agencies, said Ciaran Dynes, senior vice president of products, Talend. Thus, it is becoming increasingly important for organisations to have an automated way to integrate previously distinct data sources such as weather, transportation, and demographics to draw meaningful conclusions. Disy's new connector significantly eases this process so customers can have greater data agility.

## Geospatial operations

Geospatial analysis requires software capable of understanding the special needs of alphanumeric and geospatial data. The new connector by Talend and Disy provides specialised components for geospatial operations such as calculating longitude and latitude coordinates, converting various location details into 2D or 3D point geometries, and determining centroids for location triangulation. This information can be used for a variety of purposes including, safe traffic flow, precision farming and/or geo-marketing, whereby promotional offers can be delivered based on a consumer's proximity to a particular brand.

Combining diverse data remains a big challenge because of the potential disparities in data source, coverage, quality, compatibility, confidentiality, and update frequency, among others, stated Claus Hofmann, CEO of Disy. His company is partnering with Talend on developing tools for handling such inconsistencies between datasets and offering customers a way to geometrically enrich their workflows with the abundance of geospatial information available today. As yet, creating evaluation databases and transforming them to datawarehouses has always required a diverse set of tools from various software manufacturers. There has never been a single consistent tool doing combined operations for geodata and alphanumeric data.

The new Geospatial Connector is available immediately from Disy. A free version of the connector can be downloaded [here](#). Customers requiring support can contact a Disy sales representative for a commercial version of the connector. Additional information on the capabilities and benefits of the Disy Geospatial Connector can be found on [www.disy.net](http://www.disy.net). For more information on Talend's entire portfolio of solutions, visit [www.talend.com](http://www.talend.com) or the [Talend blog](#).

*Disy presents the new GeoSpatial Integration Connector for Talend live during this year's Intergeo trade show at the Disy booth (C3.025).*