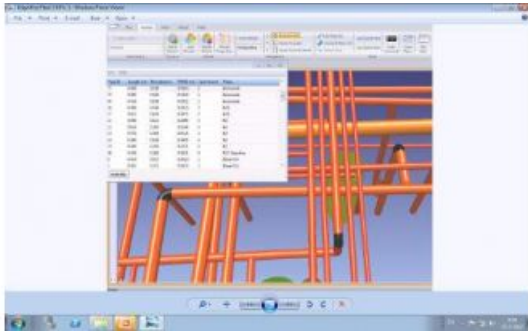


EdgeWise Plant 3.0



ClearEdge3D has released EdgeWise Plant 3.0 including six major new features to optimise and accelerate 3D modelling workflows. The software automates the extraction of complex CAD pipe geometry from 3D laser scanned data, dramatically reducing the time needed to create accurate as-built 3D models of process plant facilities.

These new features represent a significant step forward in plant modelling technology and promise even greater efficiencies for engineering firms and owner/operators alike. EdgeWise Plant 3.0's new features include 64-bit, multi-core processing which extracts pipes up to 12 times faster than previous releases, quality assurance tools which allow firms to validate the accuracy and fit of every pipe, improved extraction algorithms to identify nearly all the

pipes in the scene, new automated finishing tools to quickly connect pipe runs and fit any missed pipes to the point cloud, and SmartSheet technology which extracts key pipe intelligence such as OD, length and bend into an easy-to-edit worksheet and enables exporting of pipes to layers or levels in AutoCAD, MicroStation or Cyclone.

The new QA tools in 3.0 rank extracted pipes by the quality of the pipe's fit against the point cloud. Poorly fitting pipes can be easily edited to conform precisely to the scan data. Any pipes missed in the first-pass extraction can be quickly added and fit to the point cloud. The new software also extracts critical intelligence about the pipe runs and displays it in a worksheet which users can annotate and edit. When the model is complete, the pipe geometry and intelligence can be exported as layers or levels in AutoCAD, MicroStation or Cyclone.

<https://www.gim-international.com/content/article/edgewise-plant-3-0>
