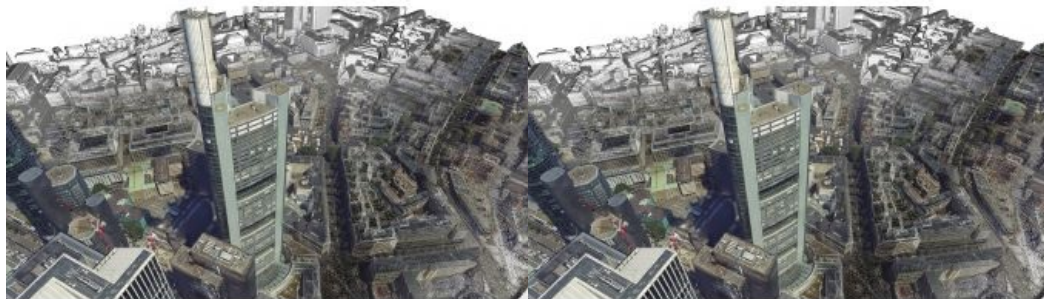


Esri Acquires nFrames to Prioritize 3D Capabilities



Esri has announced its acquisition of nFrames, a German technology company that develops SURE, an industry-leading imagery and Lidar 3D surface reconstruction software. This will enable the fusion of imagery with 3D GIS, allowing nFrames and Esri users to seamlessly capture and analyse 3D data from aerial, drone and ground-based sensors in an automated end-to-end

process.

SURE scales 3D data creation to large city and countrywide airborne image datasets and projects, while giving professional photogrammetry workflows improved precision, speed, and simplicity on premises or in the cloud. Through this acquisition, Esri gains a robust production engine that transforms imagery and lidar data into point clouds, phototextured 3D meshes, and true orthos. Users in government; urban planning; or architecture, engineering, and construction (AEC) can use SURE to generate 3D maps at scales from individual construction sites to entire cities and countries.

Creating a Multidimensional Experience

"nFrames is a leading provider of 3D image reconstruction software and services, and I am excited to welcome the company to the Esri family," said Jack Dangermond, [Esri](#) founder and president. "As Esri continues down its path of innovation to create a multidimensional experience, this acquisition enhances our ability to create extremely high-quality 3D data from imagery, which is critical for our customers in the municipal, planning, and AEC industries."

SURE software will become part of the company's ArcGIS platform. In the future, Esri will make SURE capabilities available in [ArcGIS Drone2Map](#) and [Site Scan for ArcGIS](#) so users can create better meshes, point clouds, and true orthos from their UAV imagery. This will also further improve ArcGIS orthomapping and drone processing capabilities across the platform.



nFrames' Sure software will become part of Esri's ArcGIS platform.

Unlocking the Full Value of 3D Surface Data

"We are excited to take the next step in our mission of empowering organizations with leading technology for multisensor reality capture – from air and ground," said Konrad Wenzel, CEO and cofounder of nFrames. "Together with Esri, we will be able to unlock the full value of 3D surface data through GIS by connecting geometry with metainformation to provide spatial context. This fully automatic chain from data capture to analytics will enable smarter decision-making."

The nFrames headquarters will now serve as a new Esri R&D center based in the German city of Stuttgart, focused on cutting-edge reality capture technology. This R&D center will continue its work on the SURE technology, support SURE customers, and also provide support for 3D GIS across its line of products.

"We are looking forward to working on this vision as part of a global, industry-leading organization, developing cutting-edge solutions with a growing team while serving our customers and partners with the same passion as before," continued Wenzel.

For more information about Esri and SURE software, [see here](#).



<https://www.gim-international.com/content/news/esri-acquires-nframes-to-prioritize-3d-capabilities>
