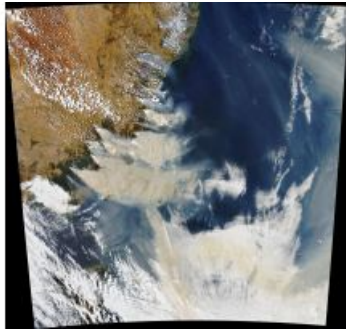


# Smoke and Fires Engulf Southeastern Australia



[Forecasters predicted](#) extreme fire conditions in southeastern Australia for the weekend of 4-5 January 2020, and they were correct in their assessment. This natural-colour image was acquired on 4 January by the [Moderate Resolution Imaging Spectroradiometer](#) (MODIS) on NASA's [Aqua](#) satellite. Smoke has a tan colour, while clouds are bright white. It is likely that some of the white patches above the smoke are pyrocumulonimbus clouds – clouds created by the convection and heat rising from a fire.

*NASA Earth Observatory image by [Joshua Stevens](#), using MODIS data from [NASA EOSDIS/LANCE](#) and [GIBS/Worldview](#). (Text by [Michael Carlowicz](#))*

---

<https://www.gim-international.com/content/news/fires-and-smoke-engulf-southeastern-australia>

---