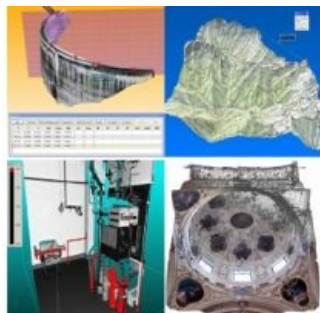


Gexcel Laser Data Software



Gexcel (Italy), a Spin Off Company of the University of Brescia (Italy) and a developer of software and technical solutions for Geomatics and Survey with special focus on Laser Scanner technologies, has unveiled its two software packages.

JRC 3D Reconstructor is a complete professional software package for treating 3D data from laser scanner and topographical measure in combination with digital images.

JRC 3D Reconstructor comes from the collaboration with the European Commission, who applies the software for 3D surveillance and verification of plants design, in particular on nuclear plants. JRC 3D Reconstructor offers a solution for several fields of application: land survey, geology, civil engineering, architectural and cultural heritage applications.

3DManager is a tool for 3D data drawing. It is able to digitise laser data and to link 3D data with an external data base. 3DManager is developed to answer the need of not-expert final users to easily extract information, measures and drawing from 3D data set.

<http://www.reconstructor.it/>

<http://ipsc.jrc.cec.eu.int/>