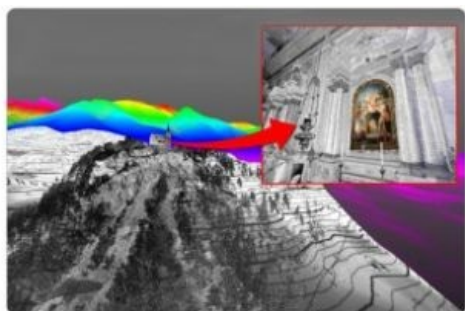


Gexcel Presents Software Solution for FARO Asia Pacific 3D TLS



Gexcel will be joining forces with FARO Asia Pacific in presenting its software solution for 3D heritage documentation. Technical manager architect Giorgia Rossi will present the dedicated workflow for managing 3D FARO data in the cultural heritage field in two webinars on 10 July at 1 p.m. and on 11 July at 2 p.m., both Singapore time (UCT/GMT +8).

The use of laser scanning in the heritage field is already a well accepted procedure to help the digital preservation of cultural sites all over the world. The FARO 3D terrestrial laser scanners and Gexcel software solutions provide cultural heritage experts with the newest unique methods to extract the information needed. These webinar sessions will demonstrate easy and intuitive workflows, where anyone involved in the heritage sector

can create scaled orthoimages, elevation, plans and sections, to assist with the set-up and execution of restoration projects.

The following links will direct you to the specific webinars suited for your language and regional needs:

English link for registration covering Singapore, Australia, New Zealand, India and SE Asia

<http://www.faroasia.com/epu/sg/Index.php?p=3332>

Chinese link for registration covering China and Taiwan

<http://www.faroasia.com/epu/cn/index.php?p=2920>

Japanese link for registration covering Japan

<http://www.faroasia.com/home/jp/index.php>

Gexcel Srl has a rich history spanning more than 10 years of proven fully featured Lidar and imagery analysis software packages with the JRC 3D Reconstructor, completely compatible with all terrestrial, mobile and airborne scanners from manufacturers such as FARO, Leica, MDL, Optech, RIEGL, Topcon, Trimble and Z+F. Gexcel is a spinoff company of the University of Brescia, established in 2007 from the academic know-how of the University and the applied research achievements of the European Joint Research Centre (JRC), located in Ispra (Italy). Gexcel supports all major standard formats such as the ASTM E57 and LAS.

<https://www.gim-international.com/content/news/gexcel-presents-software-solution-for-faro-asia-pacific-3d-tls>
