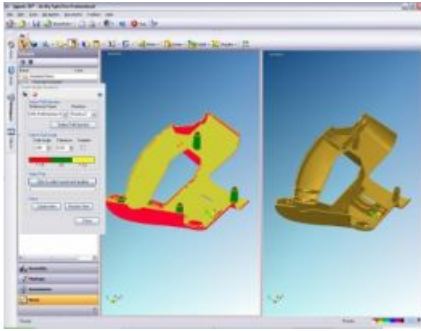


Infotech CAD Viewer SpinFire Professional



More and more companies in the manufacturing industry are searching for solutions that enable them to visualise CAD files in all areas of the organisation, without requiring an expensive CAD system. At the AMB show in Stuttgart, Infotech Enterprises (Germany) will present a solution to cope with these communication requirements: SpinFire Professional.

With this visualisation tool, 3D models and 2D drawings can be converted into the lightweight .3D format and then used for visualisation, measuring, mark-ups and collaboration. Interactive 2D and 3D CAD files can be embedded directly into Microsoft Office documents such as Word, Excel and PowerPoint.

With SpinFire Professional, all popular CAD formats can be imported, such as CATIA V4/V5, Pro/Engineer, DXF, STL, IGES, STP, Parasolid, UG, and JT. With SpinFire Professional, users can view almost any CAD format without the need of the respective CAD license.

With the new SpinFire Draft Angle Analysis module users have the possibility to control one or more parts in an assembly. The plug-in will give visual feedback on what level of draft angle has been applied to these surfaces when compared to a 'pull direction'. With different colour shades for the drafts, it is easy to see if the part can be machined.

Caption: Draft Angle Analysis in SpinFire Professional

<https://www.gim-international.com/content/news/infotech-cad-viewer-spinfire-professional>
