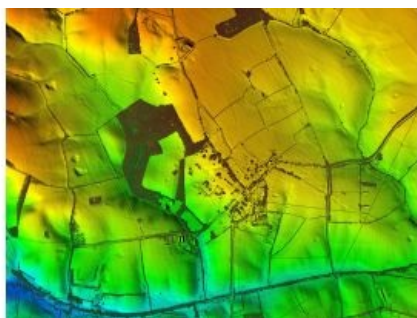


Laser Maps Help to Reveal Hidden Treasures for the National Trust



3D maps created from aircraft-mounted lasers are helping the National Trust to uncover secrets at the historic Canons Ashby estate in Northamptonshire, United Kingdom. Working with specialist archaeological and heritage practice ArchHeritage, the National Trust commissioned aerial mapping company Bluesky to complete a Lidar survey of an area of 690 hectares, around and

including the estate.

From the millions of individual laser measurements collected, [Bluesky](#) created high resolution 3D models of the bare earth surface (digital terrain model) and of its surface features, including building and trees, (digital surface model). Analysis of the Bluesky models has already uncovered evidence of more than 300 potential archaeological features within the survey area, whilst comparison with aerial photographs, dating back to the 1940s, is helping to identify more recent features and activities.

Enriching the story with Lidar data

The use of the Lidar data within such an important piece of historic landscape research gives a much better understanding of the site and its immediate environs, and is one of numerous studies that will help to inform conservation and interpretation at Canons Ashby, commented Anna Badcock, director of ArchHeritage. High quality Lidar data, such as that supplied by Bluesky, has already led to some amazing discoveries at other National Trust landscapes, and Bedrock is confident that the data will add to and enrich the story of the Canons Ashby landscape.

The Lidar data is also being used by [ArchHeritage](#) to create a Zone of Theoretical Visibility (ZTV); a computer generated tool that helps to identify the setting of Canons Ashby. The ZTV will help the National Trust understand the potential extent of views from Canons Ashby House, providing a useful tool for making decisions based on the visual impact of future landscape changes.

Scheduled Monument

Canons Ashby, named after the Black Canons who founded the Augustinian Priory in the twelfth century and the medieval word for farmstead 'ashby', has been owned by the National Trust since 1981. Famous for its Tudor manor house, incorporating the priory remains as well as terraced gardens, the house and gardens have survived largely unaltered since the 1700s. Canons Ashby is a Scheduled Monument, comprising the remains of the medieval monastery, castle settlement and fields, post medieval houses, gardens and parklands, and is located within a Conservation Area and Grade II Registered Park and Garden.