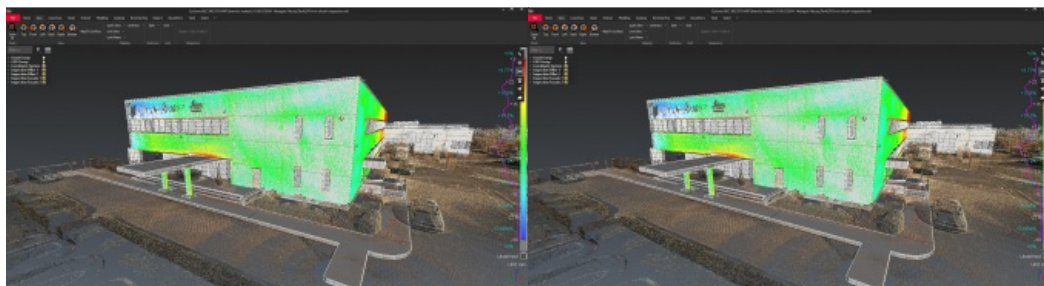


Leica Geosystems Streamlines Workflow with New Point Cloud Software



Leica Geosystems, part of Hexagon, has announced Leica Cyclone 3DR: new reality capture software that fuses technology for centralized, full-scale point cloud management from Leica Cyclone with advanced, automated point cloud analysis and modelling from 3DReshaper. The new software delivers a simplified platform for surveying, architecture, engineering and construction (AEC) and

tank inspection applications.

With industry-centric guided workflows, [Cyclone 3DR](#) includes a range of adaptable features for automating cleaning, modelling, meshing, extraction, inspection and reporting. An assortment of 3D deliverables can be created to meet the unique needs of reality capture professionals across a wide spectrum of fields. Specialized workflows, such as construction monitoring, tunnelling surveying and tank inspecting (based on the API 650/653 standard) are also available. Cyclone 3DR further connects the use of reality capture into multiple industries through its wide support of data formats, including IFC, STL, OBJ, VRML, DXF, STEP, IGES and more.

“Leica Cyclone 3DR is a huge step forward. The ability to fuse workflows of Cyclone and 3DReshaper presents a step-change in productivity and allows us to leverage the best of the two products to drive greater field-to-finish productivity,” said Sander Schröder, innovations manager at [Ingenieursbureau Coenradie](#).

Simplifying geospatial data processing

“Our aim is to make the day-to-day working life of our customers easier,” said Faheem Khan, Leica Geosystems vice president of survey solutions. “We kept this front of mind in developing Cyclone 3DR. Not only will users, new and old, feel comfortable in the software’s intuitive user interface but we also specifically created familiar application-orientated workflows tailored for the industry and application our customers operate in.”

For more information about the Leica Cyclone 3DR laser scanning software, [see here](#).



The new Leica Cyclone 3DR laser scanning software solution enables rapid validation of design and construction activities through the integration of Leica JetStream technology and BIM model support.