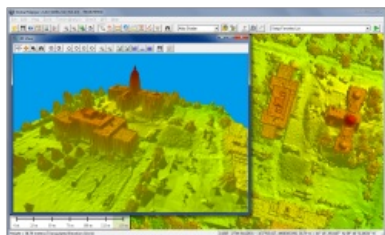


Lidar Post-processing in Global Mapper



Blue Marble Geographics has been selected to present a paper on post-processing Lidar data with Global Mapper at the European Lidar Mapping Forum (ELMF) conference in the beautiful city of Salzburg, Austria.

Blue Marble's geospatial data manipulation, visualisation and conversion solutions are used worldwide by thousands of GIS analysts at software, oil and gas, mining, civil engineering, surveying, and technology companies, as well as governmental and university organisations.

Global Mapper, which handles all versions of LAS data including 1.4 and LAS zip, has many great tools for post-processing Lidar data. Blue Marble President, Patrick

Cunningham, was asked to speak about Blue Marble's data processing software and solutions. The talk focused on the tools ability to process point clouds in a variety of ways including creating elevation grids, vectoring the data in a variety of manners including based on range and values of degrees or elevation. The talk was well received and many attendees commented on how easy the tool was to use. The Blue Marble team was showcasing all of its products, which include the Blue Marble Desktop, the Geographic Calculator, Global Mapper, GeoCore, GeoCalc, and the Global Mapper developer toolkits, to European Survey and GIS user communities.

Blue Marble president Patrick Cunningham stated that ELMF has become an excellent conference for learning about a variety of Lidar collection tools. He said that his company was very pleased to have the opportunity to showcase a great tool for post-processing that data, thus showing users some capabilities of Blue Marble that they may not have been aware of.

<https://www.gim-international.com/content/news/lidar-post-processing-in-global-mapper>
