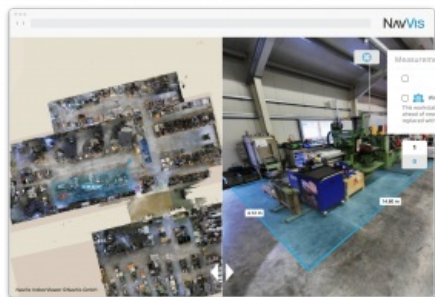


NavVis Adds Virtual Planning and Communication Features to IndoorViewer Software



NavVis, known for its indoor spatial intelligence technology, has announced the release of NavVis IndoorViewer 2.7. With this software release, users can look forward to a number of additional features to the measurement tool including the ability to annotate measurements as well as being able to export and share them as PDF documents.

[NavVis](#) IndoorViewer is an innovative web-based deliverable that turns laser scan data into basic building models displayed as 360° realistic digital buildings, point clouds and customizable floorplans. The software, which is also available as a cloud-based SaaS solution – NavVis Cloud – can be set up on-demand without the need for added IT infrastructure and maintenance. Additionally, the intuitive user-friendly interface means that users without the technical expertise to work with point clouds and modeling software

can move through and interact with the building remotely, as if they were on site.

Virtual measurements based on point clouds

Earlier this year, the new and improved virtual measurement tool was launched with the release of NavVis IndoorViewer 2.6. The tool takes highly accurate virtual measurements based on point clouds and saves a significant amount of time otherwise spent travelling to a site. It also offers an impressive array of functions that, with this most recent release, have just been extended.

“We’re extremely pleased with the positive response to the new measurement tool. It’s already gained major traction across multiple industries and is being used for a number of applications. It’s a user-friendly yet incredibly accurate tool, which means it’s proven to save valuable time for both experts as well as first time users,” said Georg Schroth, NavVis CTO.

Adding context to measurements

With version 2.7 of NavVis IndoorViewer, there are now more ways to use the measurement tool for virtual planning and collaboration. The update makes it possible for users to take and save a measurement with more context, meaning they can now annotate measurements with notes and additional information in just a few clicks so that it can be easily communicated with other users.

In addition to this, there have also been some exciting changes to the Point of Interest feature in NavVis IndoorViewer. The latest update now allows those users who track processes and assets in their factories and buildings to access a detailed audit of all of the content that has been added and updated in the POIs. The new POI auditing function is highly relevant to enterprise customers and, as NavVis claims, is as simple as exporting any changes that have been made during a specified time frame as an excel sheet.