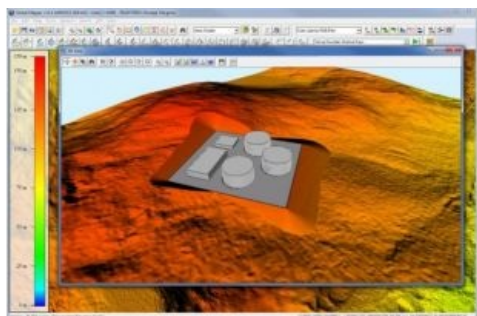


New Global Mapper Academic Lab Curriculum for GIS Educators



Blue Marble Geographics has announced the availability of Global Mapper Academic Curriculum, a series of academic labs that are offered at no cost to schools and colleges which use Global Mapper in classrooms. The Global Mapper Academic Curriculum is a series of hands-on labs that provide step-by-step instructions on many of the key functions of the software. The goal of this project is to facilitate the deployment of Global Mapper into the academic community while introducing some of the fundamental principles of GIS in a concise and understandable way.

The labs have been developed by Blue Marble Application Specialists in conjunction with a team of University of Maine System faculty.

Global Mapper is ideally suited to meet the GIS needs of most faculty and students, especially when GIS is a necessary component of a broader field of study. By balancing powerful GIS data processing and analysis functionality with simplicity of design, Global Mapper allows teachers to focus on the practical application of spatial technology rather than spend valuable classroom time teaching students how to operate the requisite software.

Teaching geospatial concepts with Global Mapper is ideal for academics, stated Blue Marble President, Patrick Cunningham. Based on the overwhelmingly positive feedback from student evaluators in the University of Maine System, Cunningham said he is confident that the labs will help fill a void in the teaching of GIS in many schools and colleges.

The Global Mapper Academic Curriculum materials are distributed at no cost, however, access is restricted to educational institutions. If you would like to request a copy of these materials or for more information, please see www.bluemarblegeo.com/gmcurriculum.

Blue Marble's geospatial data manipulation, visualisation and conversion solutions are used worldwide by thousands of GIS analysts at software, oil and gas, mining, civil engineering, surveying, and technology companies, as well as governmental and university organisations.

Image courtesy: Blue Marble Geographics.