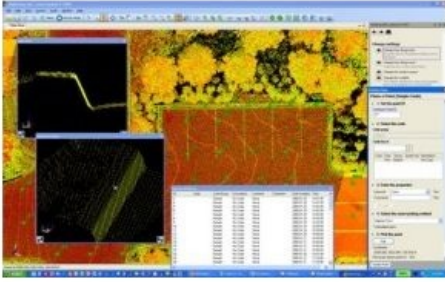


New Leica Cyclone II TOPO Software



Leica Geosystems (Switzerland) has released their next-generation software for quickly creating accurate topographic maps from laser scan data. The new software, Leica Cyclone II TOPO, is intended for standard CAD techs and does not require specialised skills in 3D or laser scanning.

Leica Geosystems' High-Definition Surveying (HDS) laser scanners and software are used for rapidly surveying sites and structures to capture their "as-is" or "as-built" condition with extraordinary detail. The resulting rich, laser scan data sets have, however, been considered by many as challenging for non-specialists to process into traditional 2D topographic maps. Leica Cyclone II TOPO overcomes this office processing hurdle, allowing everyday CAD techs to create maps from laser scan data as fast as or even

faster than making maps from survey data collected conventionally.

Unlike other point cloud software, Leica Cyclone II TOPO features a map-like, top-down user interface as the primary work area - an interface very familiar to standard CAD techs. This top-down interface is supplemented with a breakthrough capability that automatically generates associated cross-section and isometric views of the same map area. For optimal analysis, all views can be arrayed simultaneously on a single display. Moreover, each Intelligent-2D-Section View automatically shows the area of greatest topographic interest and the best section view orientation. Together, these automated views let CAD techs quickly navigate point cloud data to accurately locate topographic features.

In addition to the friendly, efficient viewing interface, new SmartPick tools let any CAD tech automatically extract specific, desired scan points from clusters of laser scan data with a single click. Users can now very quickly and accurately select "highest", "lowest", "closest to", "edge", "flow line", "line stripe" or "ground" points. Previously, users had to spend time manually navigating in 3D and then visually selecting what appeared to be the highest point, lowest point, etc.

Cyclone II TOPO applies standard methods for survey coding and for line & arc creation from High-Definition Survey scan data. Survey code lists and survey control data can be directly imported; direct export to survey CAD applications lets CAD techs create final maps using the same office workflows used with conventional survey methods.

Pricing is available from authorized Leica Geosystems representatives. Leica Cyclone II TOPO software is scheduled for release Q1 of 2008.