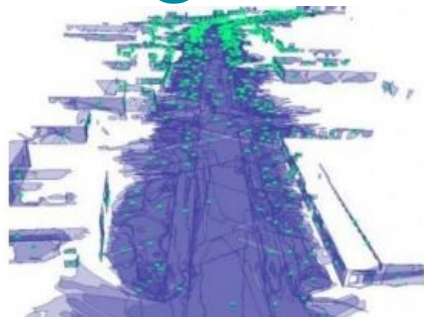


Optech Prepares for FIG Congress 2014



Optech, a leading company in high-accuracy Lidar 3D survey systems, integrated cameras, and productivity-enhancing workflows, is preparing to present details on the latest automated data alignment features of its Optech Lidar Mapping Suite software at the 2014 Congress of the International Federation of Surveyors (FIG) in Kuala Lumpur, Malaysia. Attendees can also catch a presentation by members of the University of Philippines on their experiences using Optech ALTMs for flood hazard analysis.

For any surveyor that has ever needed to manually realign data from multiple collects, regional sales manager for the Pan Asia area, David Collison, will describe how [Optech LMS](#) can automate their work by using common planar features and their unique spatial relationships to determine the optimal boresight and calibration values for each collect. A

case study involving this technique in action will follow, so interested attendees should drop by the Urban and Rural Land Use Planning 2 session (TS03G) at 11:30–13:00 on Wednesday 18 June.

Also presenting are faculty of the University of the Philippines, who will describe how they teamed up their Optech [Pegasus](#) and Gemini ALTMs to map many flood basins in the Philippines as part of the award-winning [Disaster Risk and Exposure Assessment for Mitigation \(DREAM\)](#) programme. This presentation will also explore how to optimize the data capture, collection and management processes to get the best use out of the high accuracy and point density of Optech ALTMs, and is scheduled for the Hydrography in Action 1 session (TS06J) taking place at 11:30–13:00 on Thursday 19 June.

Finally, attendees interested in talking with Optech about the latest news in the Lidar industry or discussing the best sensor configuration for solving their particular application can head to Booth 88 during the concurrent exhibition at the Kuala Lumpur Convention Centre.