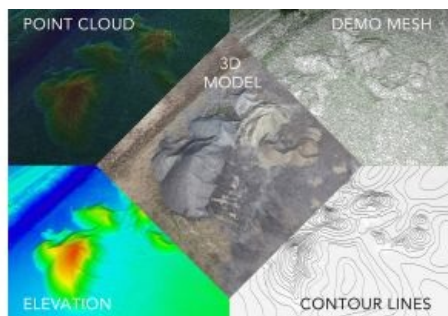


# Pixpro Introduces Mining Version of Pixprocessing



Pixpro, developer of photogrammetric software for the mining industry, is introducing Pixprocessing Mining V1.0 at GEO Business. The new product is a photogrammetric software version specifically designed and complemented to provide a greater variety of options for solving problems in the mining and surveying industries. The technical specifications of the version and configuration are set to achieve the relevant, detailed and the least time-consuming outcome.

Pixprocessing Mining V1.0 is focused on processing a full-range view of large objects, and allows the selective analysis of certain smaller objects. The software enrichments include volume difference comparison, interactive histogram, profiles and bounding box options. These features enable the automatic acquisition of the 2D and the 3D measurements and

calculations.

The manual adjustments of the reconstruction parameters allow the optimal results to be achieved. Thus, the calculations of slope angle, 3D distance, altitude, perimeter values, 3D volume difference measurements and multiple base plane selection options provide fully comprehensive documentation of the object.

Pixprocessing Mining V1.0 is applicable for the quarrying and mining, geodetic, surveying/inspection and terrain exploration sectors.

[Pixpro](#) is exhibiting at GEO Business at stand N16