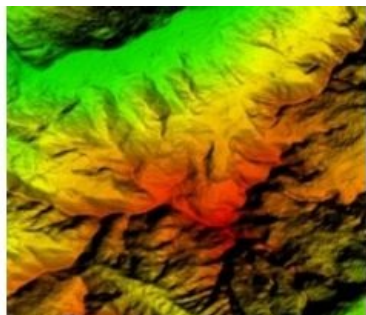


PlanetObserver Releases Global Elevation Product



The PlanetObserver team has announced the release of PlanetDEM 30, a new Digital Elevation Model (DEM) covering the entire Earth at 30-metre resolution, offering accurate, homogeneous and void-free data. PlanetDEM 30 is a fusion of 30-metre ASTER Global DEM v2.0 and PlanetDEM 90, PlanetObserver's high-quality 90-metre global DEM product.

Further to an extensive R&D programme, PlanetObserver has developed exclusive data fusion processes. Based on this proprietary technology, PlanetObserver has produced PlanetDEM 30 a totally free of ASTER GDEM residual anomalies and artifacts that highly affected overall data quality.

PlanetDEM 90 is an advanced global elevation product developed by PlanetObserver, and is used as a major source to correct and enhance ASTER GDEM data. Based on the combination of 90-metre SRTM (Shuttle Radar Topography Mission) data v4.1 corrected and completed with cartographic data, this highly accurate product has already been acquired by major players of the spatial and defence industry.

PlanetDEM 30 overall accuracy is a major asset for all applications, even the most sensitive. This worldwide 3D reference dataset is ideal for defence, orthorectification, mapping, weather systems, terrain modelling applications, energy exploration and geology, to name but a few sectors.

PlanetDEM 30 broadens PlanetDEM product suite, PlanetObserver range of elevation data.

<https://www.gim-international.com/content/news/planetobserver-releases-global-elevation-product>
