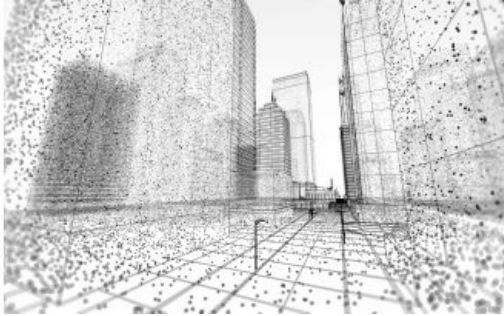


Plowman Craven Achieves BIM 19650 Kitemark



Plowman Craven has confirmed its position as a leading advocate of BIM, becoming the first dedicated UK survey company and [BIM consultancy](#) to achieve BSI Kitemark certification to reflect the new international standards for BIM. Following a comprehensive audit from BSI, Plowman Craven has gained the coveted BSI Kitemark for BIM to reflect BS EN ISO 19650, which includes both Part 1 (Concept and principles) and Part 2 (delivery phase of assets). These international standards cover the organization and digitization of information about buildings and civil engineering works, including Building Information Modelling.

The Kitemark also includes BS 1192-4, which ensures the fulfilment of the employer's information exchange requirements using COBie as part of the collaborative production of information standard. As well as delivering survey information models, Plowman Craven is now certified as a Lead Appointed Party to perform the role of the employer's BIM representative, [information manager and BIM co-ordinator](#).

Survey information models

The [BSI Kitemark](#) is the highest attainable level of BIM certification from BSI and is only achieved by organizations that can physically prove that they are delivering to the required standards. Having achieved this certification Plowman Craven is well placed to deliver industry best practice in the field of BIM. Coupled with this is a commitment to providing clients with an unbiased source of BIM advice, knowledge and expertise.

Certification also puts the company in a strong position to support new and existing clients in the delivery of survey information models and BIM consultancy services through its [BIM Centre of Excellence](#), and reflects a commitment to the adoption and championing of BIM, not only within the business but across the wider property and infrastructure industries.

Andy Butterfield, Managing Director, Global Built Environment at BSI said: "Huge congratulations to Plowman Craven for being amongst the first group of organizations - and the first dedicated survey company and BIM consultancy in the UK to achieve BSI Kitemark certification to reflect ISO 19650 parts 1 and 2. This demonstrates their commitment to best practice when using BIM and will provide numerous benefits, including giving clients confidence that they are working with partners at the highest possible standard."