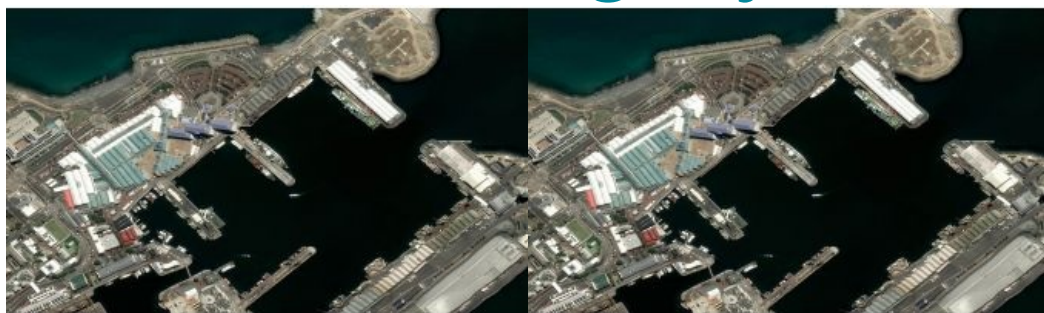


Presagis and Airbus Partner up to Provide Direct Access to Satellite Imagery



Presagis has partnered with Airbus Defence and Space to give Presagis customers direct access to the OneAtlas satellite image library from inside its Velocity 5D (V5D) digital twin production platform. V5D users can obtain Airbus imagery to fill in geospatial data gaps during digital twin generation or for dynamic updating after it has been created.

“Our content-on-demand partnership with Airbus puts the entire world of high-quality satellite imagery at the fingertips of V5D users,” said Jean-Michel Briere, Presagis president. “Direct OneAtlas access means our customers can search and access imagery from the geospatial industry’s most diverse offering of satellite data, including the new 30cm Pliades Neo imagery.”

Converting Geospatial Data into Digital Twins

Launched in November 2022 by [Presagis](#), V5D is a cloud-based platform that quickly and automatically converts massive volumes of geospatial data into high-fidelity 3D digital twins. With no geospatial processing expertise, V5D users can easily produce accurate digital twins from multiple 2D datasets, including GIS vector layers, remote sensing imagery and other structured and unstructured data of any size, format or type.

[OneAtlas](#) from Airbus is an online portal that enables users to obtain highly accurate satellite image, or combination of imagery, for their specific application, area of interest and budget. Providing access primarily to the unrivalled Airbus constellation of optical imaging satellites, OneAtlas is the gateway for geospatial professionals to choose from a wide selection of image data resolutions, spectral bands, modes, swaths and revisits.

“The OneAtlas portal also enables V5D users to schedule tasking of new satellite image acquisitions,” said Briere. “This dynamic updating ensures that 3D digital twins generated in V5D are always accurate, up to date and realistic.”

V5D leverages artificial intelligence and game engine technology to run complex visualization and simulation scenarios that derive context from the digital twins. This empowers users to better interpret the dynamic world around them, model for future situations and make improved decisions by visualizing and prioritizing conditions, challenges and risks in real time.



OneAtlas from Airbus is an online portal that enables users to obtain highly accurate satellite image, or combination of imagery. (Courtesy: Airbus)