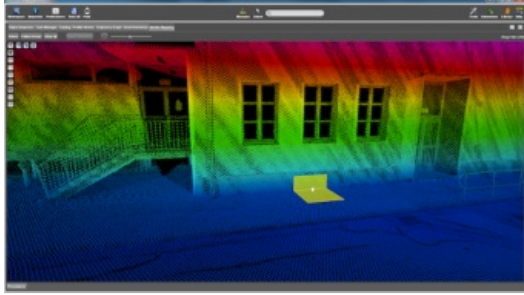


Real-time Edge Detection in Point-cloud Demonstration



Orbit GeoSpatial Technologies will showcase real-time edge detection tools for point clouds at the RIEGL User Conference, Hong Kong, from 5-8 May 2015. Edge-detection tools will be included in the upcoming version 11.1 release of the Orbit Mobile Mapping portfolio of feature extraction products.

According to Peter Bonne, CEO at Orbit GT, the RIEGL scanners produce very nice point clouds in which edge-detection is very gratifying. This simplifies every feature extraction job as edges are most likely what needs to be retained, and the edge detection precisely snaps to the edges.

<https://www.gim-international.com/content/news/real-time-edge-detection-in-point-cloud-demonstration>
