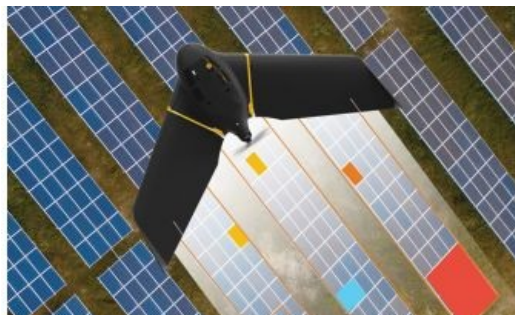


senseFly Introduces Solar 360 Thermal Drone Solution



senseFly, a leading provider of fixed-wing drone solutions, has introduced the [senseFly Solar 360](#), the latest addition to its senseFly 360 solutions range. Created in collaboration with software company [Raptor Maps](#), this offering is a uniquely efficient thermal drone solution that enables the automatic assessment of solar plant performance at a sub-module level.

Created by combining [eBee X fixed-wing drone](#) technology, senseFly's Duet T thermal mapping camera, and Raptor Maps' software, senseFly Solar 360 is a fast and fully-automated solution. It is easily integrated into solar management workflows without requiring either drone piloting skills or the manual analysis of aerial solar farm data.

"At senseFly, we are continually looking across the industry to identify new commercial partners with whom we can bring to market what our customers need, which is vertically-focused end-to-end solutions," said Gilles Labossière, CEO of senseFly. "With Raptor Maps, we are collaborating with a true solar industry pioneer. Their software takes the guesswork out of solar farm inspection and, crucially, speeds up this process – from days down to hours. This efficiency, combined with the eBee X's large coverage and reliability, ensures that farm owners and operators – or the drone service providers they employ – can inspect utility-scale solar farms more quickly, easily, and accurately than ever before."

"Solar power is the largest source of new energy generation in the world," said Nikhil Vadhavkar, CEO of Raptor Maps. "This rapid growth has fueled demand for industry-specific solutions to allow solar customers to scale. Our enterprise-grade software has been deployed across six continents and 25 million solar panels to increase power production and reduce risk and maintenance cost across solar portfolios."

senseFly Solar 360 is supplied with the customer's choice of Data Pack. These Data Packs are available in 50MW, 100MW and 200MW variants, depending on the output capacity a customer expects to assess over the course of a year.

For more information, visit www.sensefly.com/solution/solar-360-thermal-drone/. To order the solution, visit www.sensefly.com/sensefly-distributors.