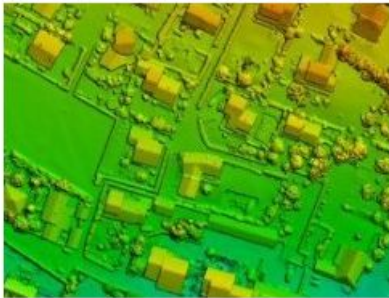


# SimActive Enables Processing in the Cloud



Photogrammetry software developer SimActive has announced that processing in the cloud is now officially supported by [Correlator3D](#). Users can subscribe to an online computing service, such as Amazon EC2, and run Correlator3D on a virtual machine.

Correlator3D is a patented end-to-end photogrammetry solution for the generation of high-quality geospatial data from satellite and aerial imagery, including UAVs. The main advantage of processing in the cloud is the capability to use multiple licenses as required. It permits an on-demand deployment of the software on several processing machines, without any computer hardware.

The new option allows customers to continuously adjust their processing power, said Louis Simard, CTO of SimActive. Combined with SimActive's monthly subscription plan, clients have the cloud's flexibility, while maintaining full control of their production workflow.

---

<https://www.gim-international.com/content/news/simactive-enables-processing-in-the-cloud>

---