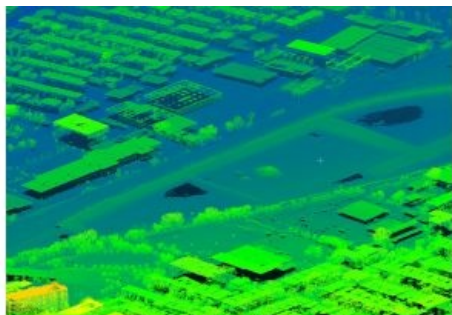


SimActive Introduces New Lidar Workflow



SimActive, a world-leading developer of photogrammetry software, has announced a new Lidar workflow integrated into its Correlator3D product. The capability allows the import of a point cloud in the software and the performance of registration with an image dataset. Using Lidar as a control eliminates the need for traditional ground control points (GCPs) when processing the photos.

The registration occurs during aerial triangulation, leading to a precise alignment of imagery with the Lidar data. Following this, [Correlator3D](#) can output colourized point clouds as well as seamless orthomosaics.

“Removing the need to manually tag GCPs facilitates the integration of Lidar data with imagery”, said Dr Philippe Simard, president of [SimActive](#). “Our clients can benefit from different data sources, with perfect co-registration.”

<https://www.gim-international.com/content/news/simactive-introduces-new-lidar-workflow>
