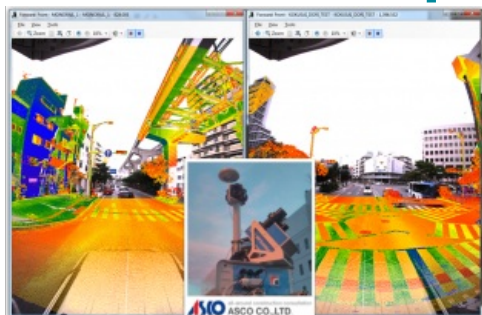


SITECO RoadScanner4 for ASCO Japan



Over 120 kilometres of roadway infrastructure on the Japanese island of Okinawa were captured in February 2015 in high-accuracy 3D detail using SITECO's RoadScanner4 mobile mapping system equipped with [Zoller & Frölich Profiler 9012](#) scanners and an iXBlue Landins inertial navigation system. The system is complemented with spherical colour imagery from Point Grey's LadyBug5 camera.

The configuration chosen by ASCO includes an Applanix POSLV 510 inertial navigation system and can be used with either Z+F or Faro Focus laser-scanners, thanks to the flexible and independent technology developed by Siteco.

The survey project was carried out by Siteco as a pilot project for ASCO, Japan. The entire survey data collection, including equipment installation on the vehicle, was performed in two days with an additional two days to fully process the data to an overall accuracy of better than 2cm. The often close quarters of urban areas found in Japanese cities are a regular challenge for these type of surveys, but proved no challenge for RoadScanner4. SITECO's RS-Postprocess and Road-SIT Survey software suite delivered detailed geometries, relief displays, colour enhanced point clouds, fly-through movies and an abundance of photogrammetric measurements.

After purchase the system, the Asco engineers were fully trained throughout the four day survey deployment. The RoadScanner4 system is being deployed immediately throughout Japan.