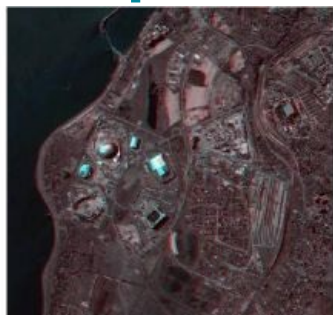


Sochi Olympics Construction in Perspective



Looking forward to the coming 2014 Sochi Winter Olympics, the city of Sochi, Russia, is seized with a true construction boom. Tight schedule and immense scopes of construction activities require special attention towards design and survey work and detailed ecological monitoring of the location. In September 2011, Scanex R&D Center received a high-resolution image of the city was received from EROS B satellite. An anaglyphic image and a series of multi-temporal images are published here. 3D glasses are required to view this stereo image.

Analysis of multi-temporal satellite images enables to assess the dynamics of Olympic facilities building-up in different parts of the city. In all, over 200 facilities (sports, residential, commercial) and all related infrastructure are to be erected in Sochi by 2014 Olympic Games. The largest and most expensive facility built within the frames of the Olympics preparations is the road Adler-Krasnaya Polyana.

The article of Yu. Kuznetsova, Satellite-based monitoring of Olympic construction and dangerous geomorphologic processes, Earth from Space - the Most Effective Solutions (link below), gives more insight in the construction and structure of the site.