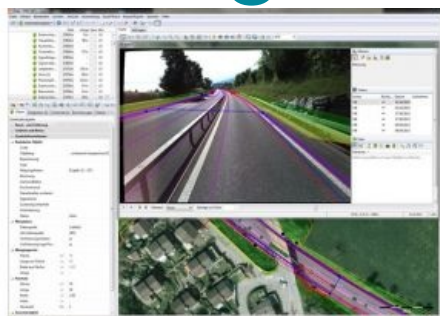


# Swiss Use TatukGIS SDK for Road Infrastructure Management



Switzerland-based geologix AG has used the TatukGIS Developer Kernel to develop GIS functionality in its 'Logo' information system for planning, managing and maintaining road infrastructure. Logo is targeted at all people and organisations entrusted with road administration, including road engineering and construction planning. Logo customers in Switzerland and Germany range from small villages with up to 30km of roads and streets to cities with up to 500km of road and streets and counties/states with more than 3,000km of roads and streets to manage.

With its modular design, Logo can be adapted to different requirements. Dedicated modules contain functions and models for managing the whole range of road-related infrastructure, including pavement quality, drainage, bridges, road signs, signalisation,

street lighting and power consumption, speed restrictions, traffic levels, traffic accident details, traffic noise pollution calculation and abatement, inspection and repair inventory, roadwork maintenance planning and project management.

All infrastructure objects can be generated, displayed, reported on, and analysed. Pre-defined reports or custom reports defined from unique queries can be superimposed and displayed. Maps are generated in real time, showing the location of data being reported on using different colours. The data can be imported and exported in various formats. Logo supports interfaces to many specialised road data acquisition systems and GIS applications using OGC standards. Pictures and videos can be integrated into customer solutions, offering a better orientation to the 'real world'.

Learn more about the Logo road information system by visiting the geologix website at: [www.geologix.ch](http://www.geologix.ch)

Learn more about the TatukGIS Developer Kernel at: [www.tatukgis.com](http://www.tatukgis.com)