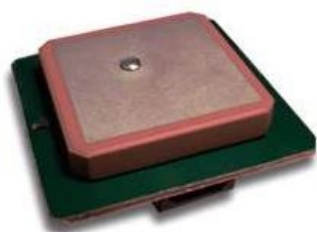


Tallysman Introduces Dual Band + L-band Services GNSS Antenna



Tallysman, a leading manufacturer of economical high performance GNSS antennas and related products, has announced the introduction of a through hole mount dual band plus L-Band GNSS antenna: TW3892.

The introduction of this antenna is a continuation of Tallysman's expansion into broader band GNSS antennas. The antenna employs Tallysman's acclaimed [Accutenna technology](#). The TW3892 is capable of receiving GPS L1/L2, GLONASS G1/G2, BeiDou B1, Galileo E1 plus L-band correction services (1213MHz to 1261MHz + 1525MHz to 1610MHz). This precisely tuned antenna has a tight pre-filter to protect against intermodulation and saturation caused by high level cellular 700MHz and other signals

The antenna provides superior multi-path signal rejection, a linear phase response, and a tight Phase Centre Variation (PCV), all at a new economical price point. According to Tallysman, this antenna provides comparable or superior performance to higher priced dual band GNSS antennas on the market. It is particularly suitable for precision agriculture, autonomous vehicles, navigation, RTK, PPP, and other applications where precision matters. The ability of the TW3892 to access L-Band correction services extends its utility to a wider range of applications.

The TW3892 is housed in a through-hole mount, weather-proof enclosure for permanent installations. For non-rooftop installations, L Bracket or Pipe Mount (part numbers 23-0040-0, 23-0065-0 respectively) are available. A 100mm ground plane is recommended for non-roof-top installations.

<https://www.gim-international.com/content/news/tallysman-introduces-dual-band-l-band-services-gnss-antenna>
