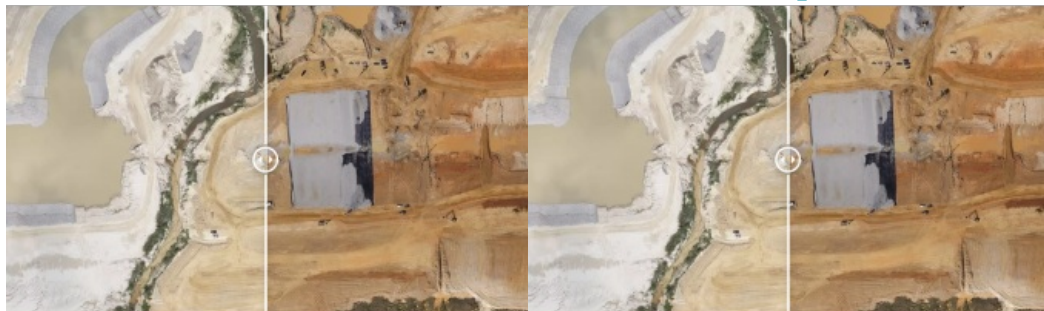


Wingtra launches new payload for faster data capture



Wingtra has unveiled the RGB61 payload. According to the Swiss-based mapping drone specialist, this new sensor marks a leap forward for the entire UAV mapping industry, as engineers have customized the Sony Alpha 7 Mark IV 61MP RGB camera to offer the most efficient, data-light UAV data solution on the market. This is combined with in-app light-settings control, and reliable ultra-high accuracy

image capture with every flight.

"Because RGB61 allows you to capture 600ha in two flights instead of three, and process 40% less data for the same area, customers are going to be able to map large areas in tighter time windows, plus take on more projects due to dramatically faster turnaround times," said Julian Mackern, product manager at Wingtra. "Imagine if you had a project that would take nine flight hours to cover before, and you could now do it in six but with roughly half the images to process... because that is what you can do with this payload. And all with richer image detail," he continued.

Identifying crucial map features

To maximize data capture efficiency and minimize distortion, the [RGB61](#) incorporates a premium 24mm lens, ensuring high-quality image output. The improved image quality greatly assists in the identification of crucial map features and enhances the accuracy of point matching in post-processing photogrammetry software. The payload seamlessly integrates with WingtraPilot, the mission-planning application for WingtraOne, enabling precise control even in challenging lighting conditions.

"With this RGB61 integration, we offer customers a quick and intuitive way to make sure their images will be the best quality," Mackern explained. "With the tap of a menu option in WingtraPilot, they choose the right camera settings for the light levels on the project site."

The RGB61 enhances Wingtra's renowned standard by integrating a top-notch PPK GNSS data correction system, guaranteeing exceptional precision. This seamless integration empowers customers to achieve survey-grade results and capture the imagery they require with every flight of the [WingtraOne GEN II](#) VTOL fixed-wing drone while minimizing the need for ground control. Moreover, strategic partnerships with industry leaders like Propeller and Pix4D contribute to the elevated level of resolution delivered.

"Our customers work on sensitive projects like airports runway mapping and in projects where weather might constrict flight windows. So capturing large areas, fast, is key to saving money, keeping personnel safe and delivering timely results to stakeholders," said Marcos Bayuelo, vice president product at Wingtra. "From flight to deliverables, the RGB61 provides them with exactly this, without compromise on accuracy or image quality."



Wingtra's RGB61 payload comes with enhanced contrast and saturation, plus in-app light settings control. (Image courtesy: Wingtra)